



## From the «Pizzo della Croce» to the Highway «A2»

Lessons learned from Preclinical Trauma Care  
in the Ticino region



**Beppe Savary-Borioli M.D.**

specialized in general medicine FMH, emergency & rescue physician SGNOR/SSMUS  
medical director of EMS SALVA, Locarno, president of the medical committee FCTSA, Lugano  
vice-president IVR/IAS, Bern

### «Sugar peak»



**Your  
«Pizzo della Croce»  
and «A2»**



**«10 Km Stau vor dem  
Gotthardtunnel»**

**In the preclinical emergency medicine  
important things are simple  
and  
simple things are important**

**winch rescue  
operation in the «Dimitri»  
climbing route**

**Our  
«Pizzo della Croce»  
and «A2»**

**car accident near  
«Lugano Nord»**



**«Cantonal matters...»**

**The Southern Swiss preclinical trauma care system**

**geographical context**

**challenges**

**answers to the challenges**



**Asterix CHEZ LES HELVETES**

Downtown Switzerland

Welschland

Röstigraben

Monte Polenta

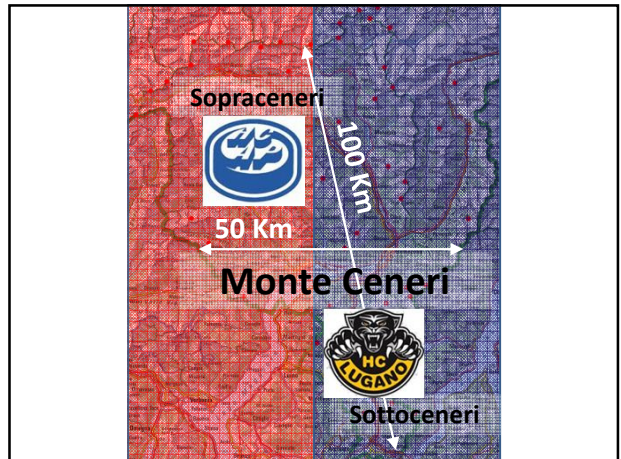
il Sud

Shangri-va-la-is

16:10 – 16:30

3<sup>rd</sup> SWISS trauma & Resuscitation Day

Helvetia omnia divisa est in partes tres



Sopraceneri

50 Km

100 Km

Monte Ceneri

Sottoceneri

HC LUGANO



**Bellinzona**  
the castles

UNESCO



**Locarno**  
The International Film Festival in Piazza Grande



**Lugano**  
banks, lake & LEGA



**Mendrisio / Chiasso**  
next exit: Italy

ITALIA  
SENZA USCITA

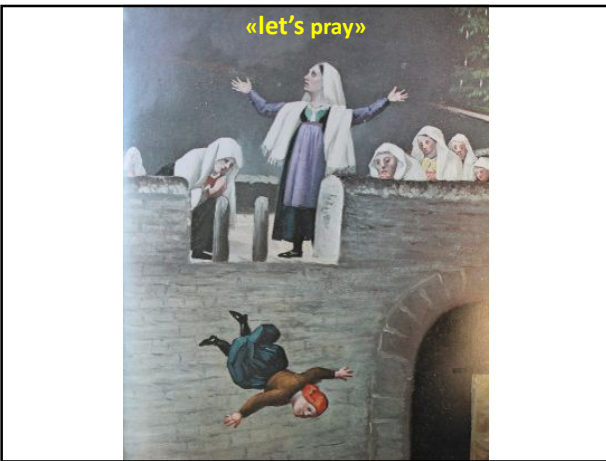


**Askona**  
Swiss / German Florida

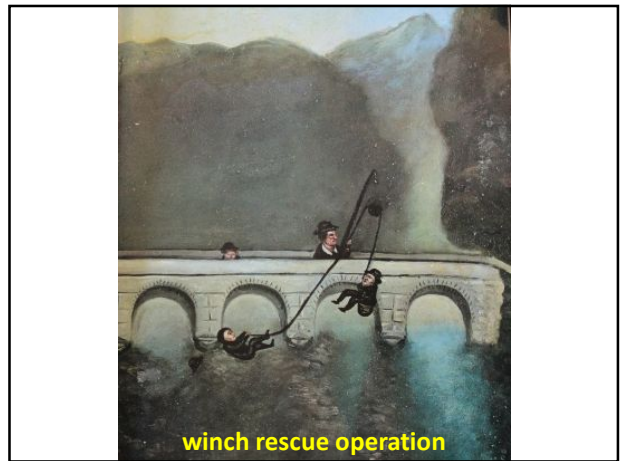


Madonna's rescue team

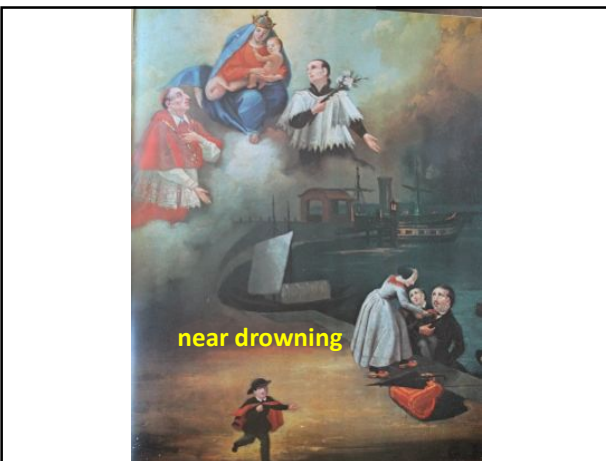
C.R. («Grazia Ricevuta»)



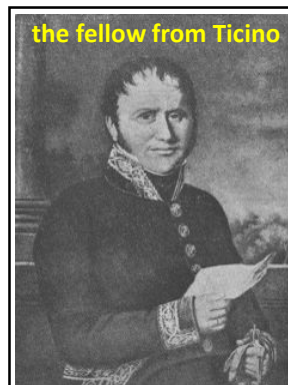
«let's pray»



winch rescue operation

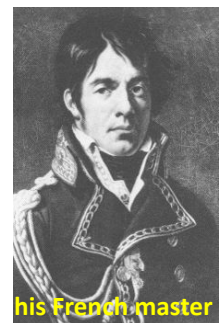


near drowning



the fellow from Ticino

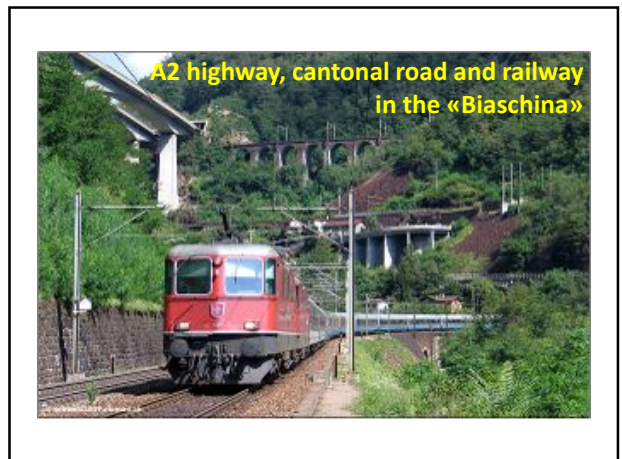
**Tommaso Rima**  
*Director of the Military Hospital of Venice*



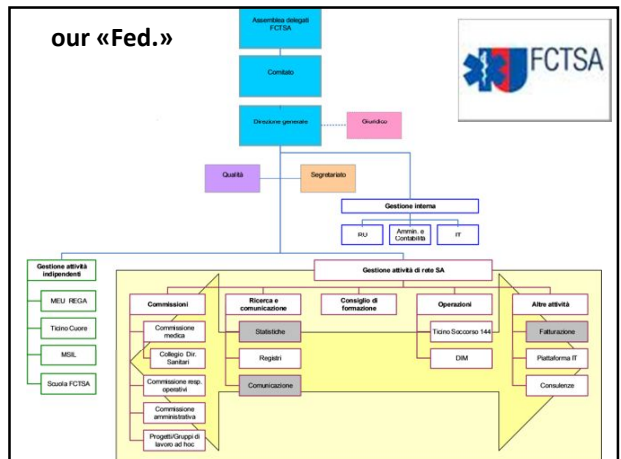
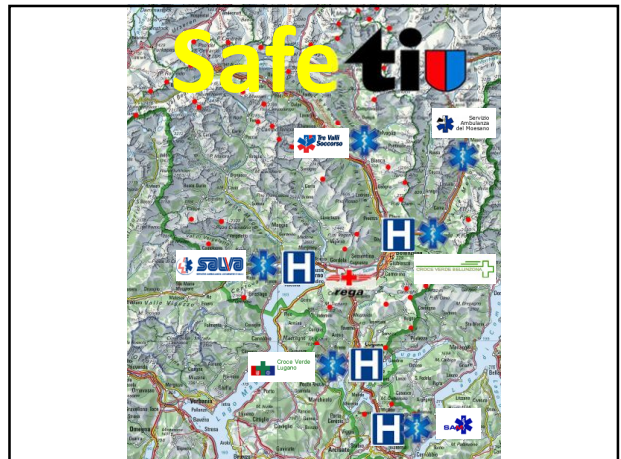
his French master

Jean Dominique Larrey  
*Napoleon's chief surgeon*











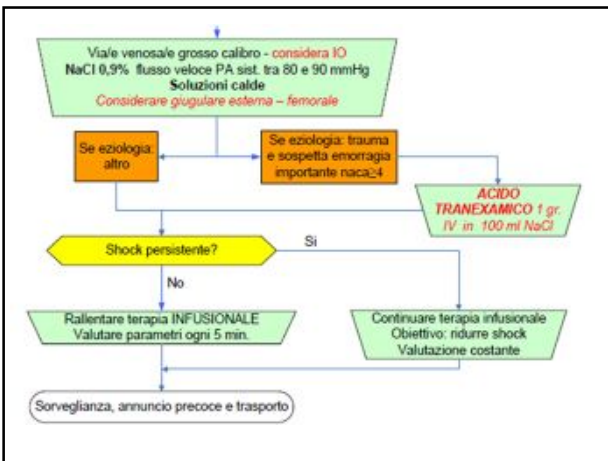
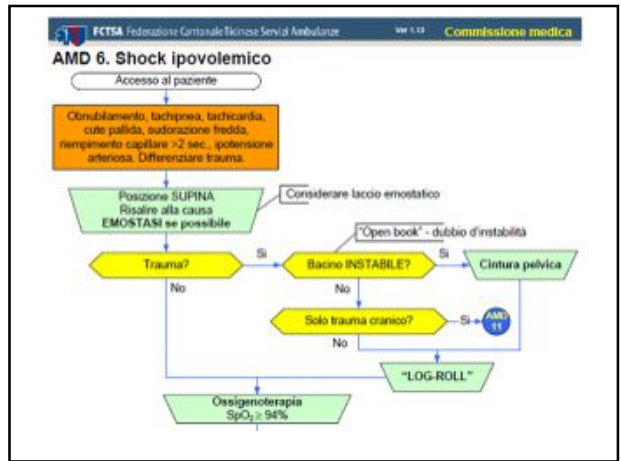
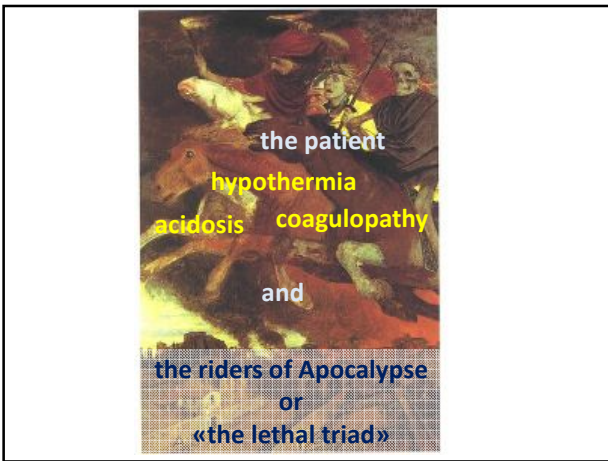
Time is muscle, brain or simply: life

Therefore the strategy of FCTSA focuses on the First Hour Quintet:

- Cardiac Arrest
- Chest pain
- Stroke
- Breathing Difficulties
- Severe Trauma







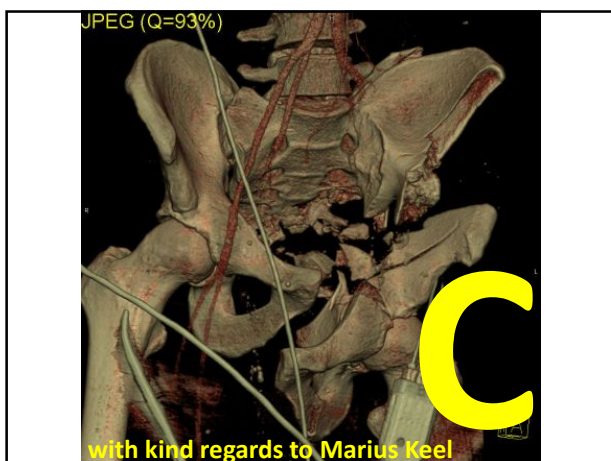
Safety first, for oneself and for everybody:  
Assess and avoid danger



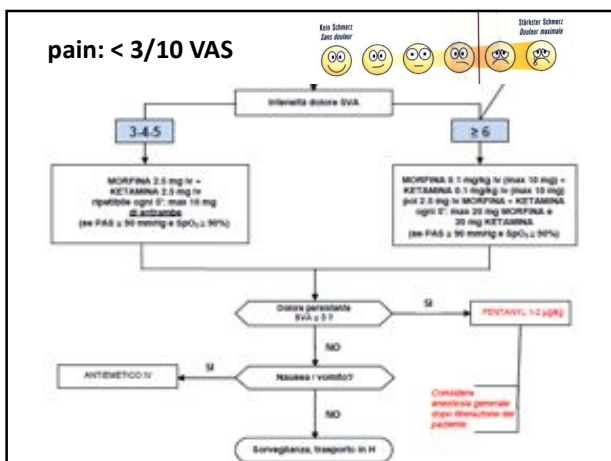
Early organize support if you need it

Check and treat the patient step by step:  
«find it, fix it, keep it fixed and don't forget it»

Proceed according to the «ABCDE»







**Repeat your checks, always verify the results of your actions and correct them if necessary**

**You encounter a problem? Return to «A»**

**Anticipate evolution and complications**

**Early organize the transfer (by ground/ air)**

**Early contact the receiving hospital**

**Remember: ten platinum minutes on site often «less is more»**



**Follow the principles of CRM (Crew Resource Management)**

**Prepare and perform an efficient handover of the patient to the next caring team**

**Remember post intervention debriefing**

**Use CIRS (Critical Incident Reporting System) and organize psychological support if necessary**



difficult & slow extraction



rescue between earth & sky



preH & H people: handover in the E.R.



we train the teams in our simulation center



Copyright ServusTV

only for non-commercial use



pan, vin, e salamin:  
welcome in Ticino



